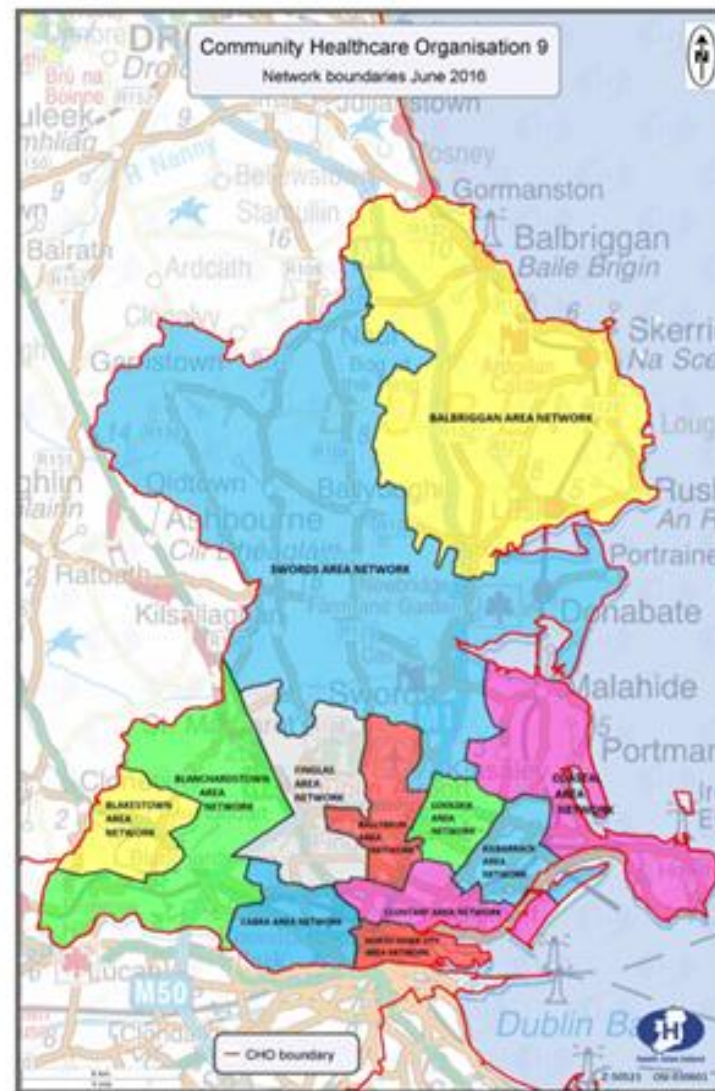


There are 12 Network Teams in Dublin North City and County (DNCC), each child is mapped to their home address.  
 If you are unsure which Network is appropriate please contact the appropriate lead agency for further information

Children's Disability Network Team	Lead Agency	Children's Disability Network Manager	Areas covered
Balbriggan	CRC	Kellie Bradley	Skerries, Rush, Lusk
Swords	CRC	Barbara Shinnars	Swords, Oldtown, Donabate
Coastal	SMH	Aoife Quinn (due to start at end of June 2021)	Malahide, Portmarnock, Howth, Sutton, Baldoyle
Coolock	SMH	Niamh Giltinan	Beaumont, Darndale, Priorswood
Kilbarrack	SMH	Sinead O'Sullivan	Edenmore, Harmonstown, Artane, Raheny, Clongriffin, Donaghmede
Finglas	HSE	Sinead English	North Glasnevin, St. Margarets, Finglas
Ballymun	SMH	Tomas Flanagan	Ballymun, Larkhill, Whitehall
Cabra/Grangegorman	DOC	Vivienne Finn	Ashtown, Navan Road, Cabra, Stoneybatter
North Inner City	HSE	Laura O'Connell	Summerhill, North Strand, East Wall
Clontarf	CRC	Elaine Doherty	Marino, Millmount, Clontarf
Blakestown	DOC	Elaine Finn	Mulhuddart, Hartstown, Clonsilla, Ongar, Blakestown
Blanchardstown	DOC	Deepak Kumar	Castleknock, Carpenterstown, Old Blanchardstown, Corduff, Tyreslltown

HSE | Progressing Disability Services – CHO Dublin North City and County



## How do I know where to send a referral?

There are 12 Children's Disability Network Teams (CDNTs) in Dublin North City and County. Access to the service is based on the child's home address; there are some exceptions to this for children who attend particular special school. If you are unsure which Network Team to refer to please contact one of the lead agencies to assist you.

<b>Children's Disability Network Team:</b>	<b>Areas covered:</b>	<b>Contact Email:</b>	<b>Lead Agency:</b>
<b>Balbriggan</b>	Skerries, Rush, Lusk	Stasia Concannon <a href="mailto:cdntbalbriggan@crc.ie">cdntbalbriggan@crc.ie</a>	Central Remedial Clinic (CRC)
<b>Swords</b>	Oldtown, Donabate	Barbara Shanners <a href="mailto:cdntswords@crc.ie">cdntswords@crc.ie</a>	
<b>Clontarf</b>	Marino, Millmount	Elaine Doherty <a href="mailto:cdntclontarf@crc.ie">cdntclontarf@crc.ie</a>	
<b>Coastal</b>	Malahide, Portmarnock, Howth, Sutton, Baldoyle	Aoife Quinn <a href="mailto:cdntcoastal@smh.ie">cdntcoastal@smh.ie</a>	St. Michael's House
<b>Coolock</b>	Beaumont, Darndale, Priorswood	Niamh Giltinan <a href="mailto:cdntcoolock@smh.ie">cdntcoolock@smh.ie</a>	
<b>Kilbarrack</b>	Edenmore, Harmonstown, Artane, Raheny, Clongriffin, Donaghmede	Sinead O'Sullivan <a href="mailto:cdntkilbarrack@smh.ie">cdntkilbarrack@smh.ie</a>	
<b>Ballymun</b>	Ballymun, Larkhill, Whitehall	Thomas Flanagan <a href="mailto:cdntballymun@smh.ie">cdntballymun@smh.ie</a>	
<b>North Inner City</b>	Summerhill, North Strand, East Wall	Laura O'Connell <a href="mailto:cdntnic@hse.ie">cdntnic@hse.ie</a>	HSE
<b>Finglas</b>	North Glasnevin, St. Margarets	Sinead English <a href="mailto:cdntfinglas@hse.ie">cdntfinglas@hse.ie</a>	
<b>Cabra</b>	Ashtown, Navan Road	Vivienne Finn <a href="mailto:cdntcabra@docservice.ie">cdntcabra@docservice.ie</a>	Daughters of Charity
<b>Blakestown</b>	Mulhuddart, Hartstown, Clonsilla, Ongar	Elaine Finn <a href="mailto:cdntblakestown@docservice.ie">cdntblakestown@docservice.ie</a>	
<b>Blanchardstown</b>	Castleknock, Carpenterstown, Old Blanchardstown, Corduff, Tyreslltown	Deepak Kamur <a href="mailto:cdntblanchardstown@docservice.ie">cdntblanchardstown@docservice.ie</a>	

